

3FM225 6V 225Ah(20hr)

The rechargeable batteries are lead-lead dioxide systems. The dilute sulfuric acid electrolyte is absorbed by separators and plates and thus immobilized. Should the battery be accidentally overcharged producing hydrogen and oxygen, special one-way valves allow the gases to escape thus avoiding excessive pressure build-up. Otherwise, the battery is completely sealed and is, therefore, maintenance-free, leak proof and usable in any position.



Battery Construction

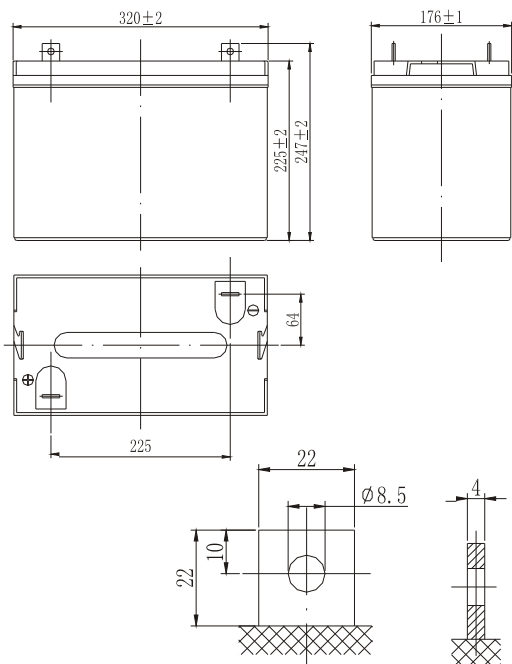
Component	Positive plate	Negative plate	Container	Cover	Safety valve	Terminal	Separator	Electrolyte
Raw material	Lead dioxide	Lead	ABS	ABS	Rubber	Copper	Fiberglass	Sulfuric acid

General Features

- Absorbent Glass Mat (AGM) technology for efficient gas recombination of up to 99% and freedom from electrolyte maintenance or water adding.
- Not restricted for air transport-complies with IATA/ICAO Special Provision A67.
- UL-recognized component.
- Can be mounted in any orientation.
- Computer designed lead, calcium tin alloy grid for high power density.
- Long service life, float or cyclic applications.
- Maintenance-free operation.
- Low self discharge.

Dimensions and Weight

Length(mm / inch).....320 / 12.60
 Width(mm / inch).....176 / 6.93
 Height(mm / inch).....225 / 8.86
 Total Height(mm / inch).....247 / 9.72
 Approx. Weight(Kg / lbs).....30.5 / 67.24



Performance Characteristics

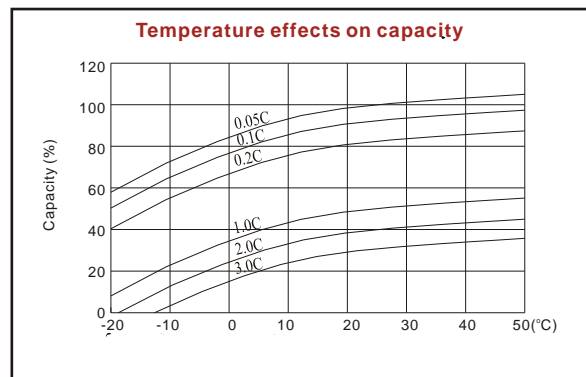
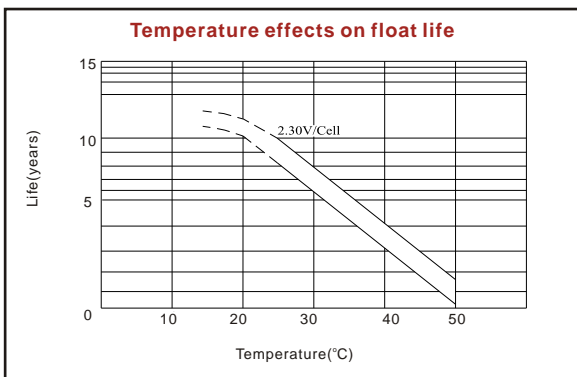
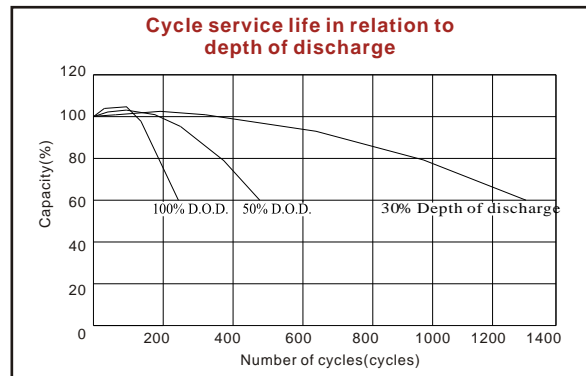
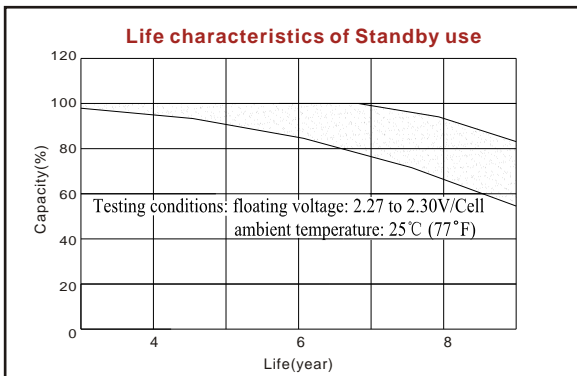
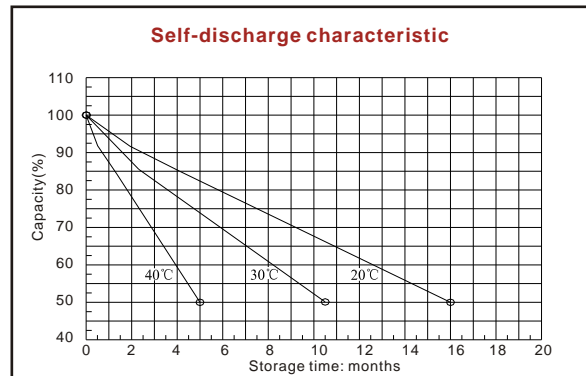
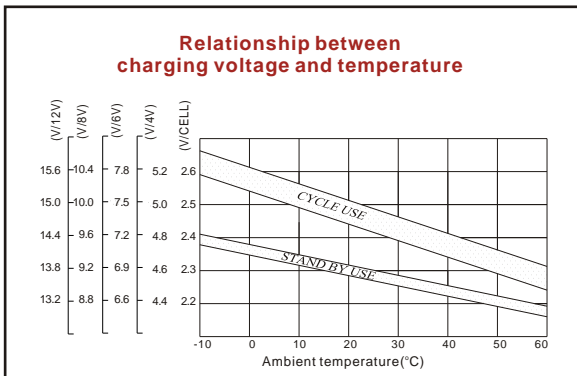
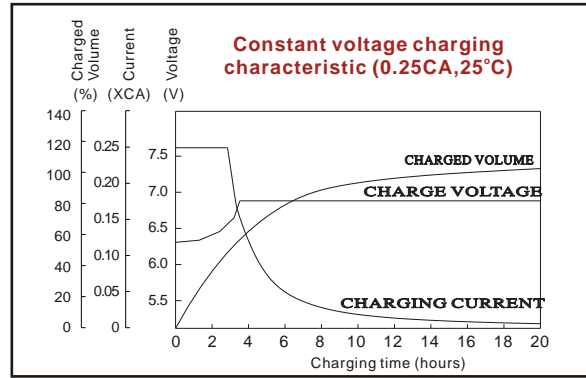
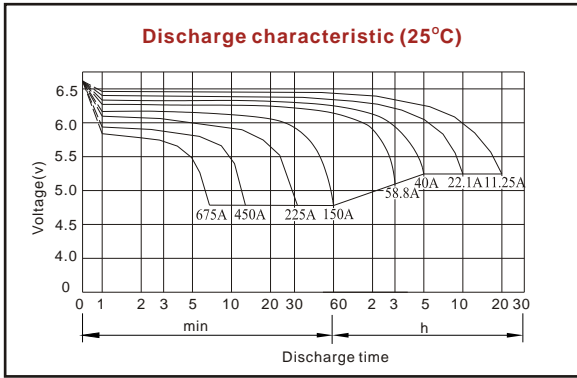
Nominal Voltage6V
 Number of cell3
 Design Life10 years
 Nominal Capacity 77°F(25°C)
 20 hour rate (11.25A, 5.25V)..... 225Ah
 10 hour rate (22.1A, 5.25V)..... 221Ah
 5 hour rate (40A, 5.25V)..... 200Ah
 1 hour rate (150A, 4.8V)..... 150Ah
 Internal Resistance
 Fully Charged battery 77°F(25°C)..... 3.2mOhms
 Self-Discharge
 3% of capacity declined per month at 20°C(average)
 Operating Temperature Range
 Discharge -20~60°C
 Charge -10~60°C
 Storage -20~60°C
 Max. Discharge Current 77°F(25°C)1000A(5s)
 Short Circuit Current 3800A
 Charge Methods: Constant Voltage Charge 77°F(25°C)
 Cycle use 7.25-7.45V
 Maximum charging current 67.5A
 Temperature compensation -15mV/°C
 Standby use 6.8-6.9V
 Temperature compensation -10mV/°C

Discharge Constant Current (Amperes at 77°F25°C)

End Point Volts/Cell	5min	10min	15min	30min	1h	3h	5h	10h	20h
1.60V	600	480	390	229	150	60.0	42.0	22.5	11.65
1.65V	554	451	367	221	147	58.8	41.5	22.4	11.43
1.70V	512	425	350	213	144	57.6	40.8	22.2	11.30
1.75V	480	397	322	204	141	56.3	40.0	22.1	11.25
1.80V	414	364	299	196	137	54.7	39.1	22.0	11.14

Discharge Constant Power (Watts at 77°F25°C)

End Point Volts/Cell	5min	10min	15min	30min	45min	1h	2h	3h	5h
1.60V	997	832	672	444	327	279	165	116	81.7
1.65V	944	791	650	428	321	274	162	115	81.1
1.70V	891	749	629	413	315	268	158	113	80.5
1.75V	837	705	608	396	308	263	155	112	80.5
1.80V	783	670	572	380	302	257	150	110	79.9



ISO9001:2000

MH25860

G4M19906-9202-E-16

www.vision-batt.com

Shenzhen Center Power Tech. Co., Ltd.
 RM 1801, 18/F, Cangsong Bldg., Terra 6 Rd, Chegongmiao, Futian District, Shenzhen 518040 China
 Tel: (+86-755) 8343 5688 Fax: (+86-755) 8384 9585 E-mail: sales@vision-batt.com